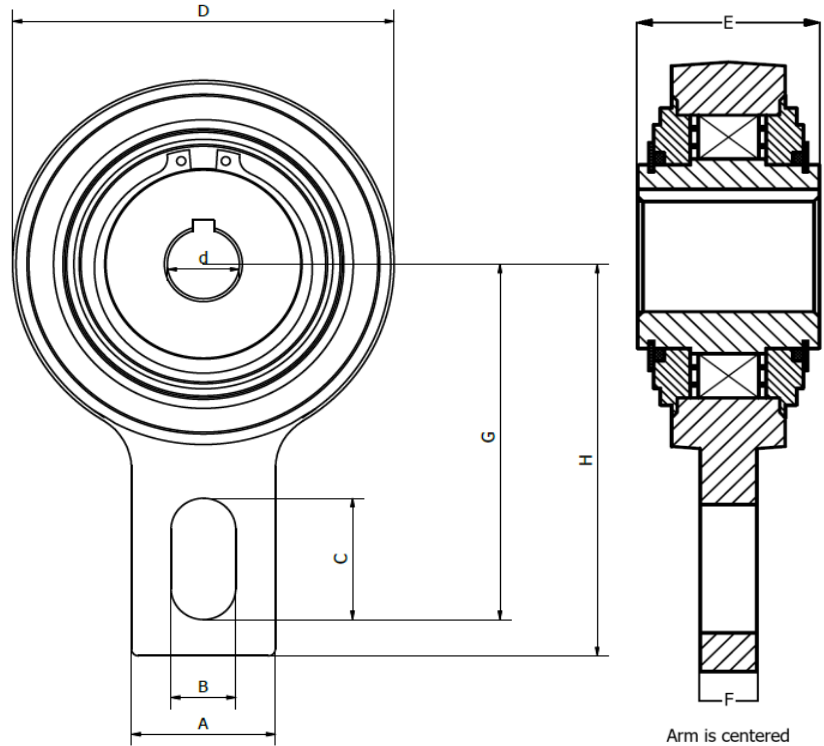




## RSPW-N Series - One Way Clutch

Sprag type freewheels, alternative to RSBW.



Item No.	Dimensions (mm)									Load Rating	Limiting Speed	Weight
	d	A	B (H11)	C	D	E	F	G	H	TKN (Nm)	(RPM)	(kg)
RSPW20-N	20	40	18	35	106	35	15	102,5	113	375	400	2
RSPW25-N	25	40	18	35	106	48	15	102,5	113	606	400	2,6
RSPW30-N	30	40	18	35	106	48	15	102,5	113	606	400	2,5
RSPW35-N	35	40	18	35	106	48	15	102,5	113	606	400	2,4
RSPW40-N	40	60	18	35	132	52	15	115	125	1295	300	4,6
RSPW45-N	45	60	18	35	132	52	15	115	125	1295	300	4,5
RSPW50-N	50	60	18	35	132	52	15	115	125	1295	300	4,5
RSPW55-N	55	60	18	35	132	52	15	115	125	1295	300	4,4
RSPW60-N	60	70	18	35	161	54	15	130	140	2550	250	6,5
RSPW65-N	65	70	18	35	161	54	15	130	140	2550	250	6,4
RSPW70-N	70	70	18	35	161	54	15	130	140	2550	250	6,4
RSPW75-N	75	70	25	45	190	70	20	150	165	4875	200	9,9
RSPW80-N	80	70	25	45	190	70	20	150	165	4875	200	9,9
RSPW90-N	90	70	25	45	190	70	20	150	165	4875	200	9,8

Maximum load rating = TKN \* 2

Keyway to DIN 6885.1

Shaft tolerance must be h6

When using the freewheel as a backstop, the lever arm must be fixed to the construction.

When using the freewheel as an intermittent feed, a bolt is mounted in the slot of the lever arm, without clamping it down. To allow for free movement, the bolt needs to have some clearance. 1-2% of the slot width B is recommended.

These freewheels are pregreased for life and ready for installation. If needed, they can be relubricated through the grease nipple.