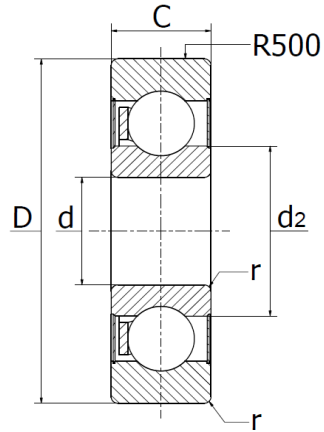
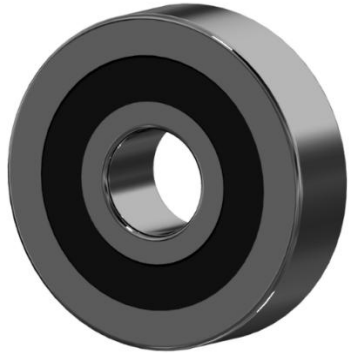




LR200NPPU Series - Track Rollers (LR200-2RSR)

Sealed on both sides, curved outer race, can be used in temperature ranges from -30°C to +110°C.



Legend:

- R** Crowning radius
- Crw** Effective dynamic load rating as track roller (radial)
- C0rw** Effective static load rating as track roller (radial)
- Curw** Fatigue limit load
- nDG** Speed (with continuous operation and grease lubrication)

Part No.	Dimensions (mm)						Mass kg	Load rating (N)			nDG (1/min)
	d	D	C	d2	R	rmin		Crw	C0rw	Curw	
LR200NPPU	10	32	9	16,6	500	0,6	0,05	5100	2380	120	13000
LR201NPPU	12	35	10	18,3	500	0,6	0,05	6000	2850	143	12000
LR202NPPU	15	40	11	21,0	500	0,6	0,07	7000	3450	175	11000
LR203NPPU	17	47	12	24,0	500	0,6	0,11	8900	4550	229	9000
LR204NPPU	20	52	14	29,0	500	1,0	0,15	11300	5900	300	8000
LR205NPPU	25	62	15	33,5	500	1,0	0,23	13300	7300	370	7000
LR206NPPU	30	72	16	37,4	500	1,0	0,33	17600	9900	510	5500
LR207NPPU	35	80	17	42,4	500	1,1	0,4	21900	12400	660	4500
LR209NPPU	45	90	19	53,2	500	1,1	0,5	23700	14100	750	3600